



Live the lifestyle. Love the location.

HOUSE & LAND PACKAGES.

THE PURUS BY REDINK HOMES.

- 406m² block with 12.5m frontage
- Land only price \$256,000

Inclusions:

- Fully ducted Daikin SMART reverse cycle air conditioning
- Rear living 4x2 + Theatre + Alfresco Design
- 31c ceilings to living areas, raised garage & alfresco
- Quality flooring & window treatments
- Side and rear colorbond fencing
- Front landscaping & reticulation
- Paving to driveway, path and alfresco
- Siteworks allowance \$20,000

\$542,990

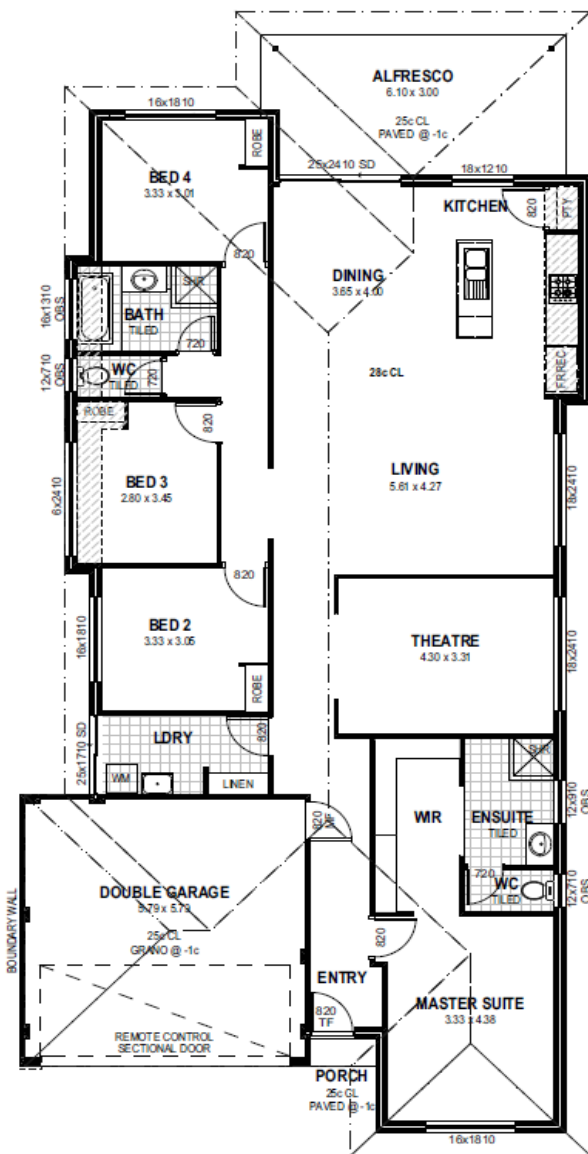
Call: 9755 8234

email: info@hansonproperty.com.au

BUILDER

Call: Steve Merrick 0409 997 735

email: steve@redinksouthwest.com.au



redink
H O M E S



The material and information contained in this flyer in relation to the home design is prepared and provided solely by the respective builder, not by Lake Treeby, and is indicative only. Persons interested in the House and Land package must make further enquiries in relation to the home design and applicable prices. Prices shown are indicative only and are subject to change. Please see the House and Land Disclaimer at vasse.com.au.

HANSON
PROPERTY GROUP



Live the lifestyle. Love the location.

LIVE THE LIFESTYLE. LOVE THE LOCATION.

Live the idyllic south west lifestyle in the town that has it all. This well-established community already has over 100 shops and businesses, two sports ovals, three parks, and two highly regarded schools, Vasse Primary and Cape Naturaliste College. Vasse Village hosts a major supermarket, cafes, restaurants, takeaway, medical facilities and speciality shops. Coming soon is a tavern, Vasse By Bunbury Farmers Market, and more large retailers.



Enhancing The Outdoors

Vasse is spoilt for choice when it comes to parks, nature, and getting active in the outdoors. Set amongst plenty of mature trees and green space, Vasse has:

- Six outdoor exercise stations, plus five formal exercise circuits
- Wadandi Track – a cycling/walking trail with surrounding park and BBQs
- Nature Playground, with a wooden cubby, climbing logs, water play, & slides
- Flying fox and half basketball court
- Vasse Sporting Complex – 2 large ovals, with hard courts, clubrooms and a bowling green still to come
- Huge all ages park (in progress) – with a pump track, hardcourts, rock climbing, BBQs, off leash dog exercise area and more fitness stations

Close-knit, connected and caring.

What most locals love about Vasse is the strong sense of neighbourly belonging. Tradies, artists, surfers, retirees and families rub shoulders harmoniously, with a shared love of where they live. The town thrives through local art events and sporting institutions like the cricket, netball, football, soccer and bowling clubs. Plus, there are a host of organised groups, activities, awards and events that bring all types of people together throughout the year.



The Centre of the South West

Vasse is perfectly located between three major towns – Busselton, Dunsborough and Margaret River. The beach is a few minutes away and there's good employment opportunities within Vasse and nearby.

Vasse ticks all the boxes to help you build a better life. We hope to welcome you soon.

Contact details:

Ph: 9755 8234
Email: info@hansonproperty.com.au
web: vasse.com.au

Sales Centre:

1/12 Napoleon Promenade, Vasse
9am to 5pm Monday to Friday
Weekends by appointment